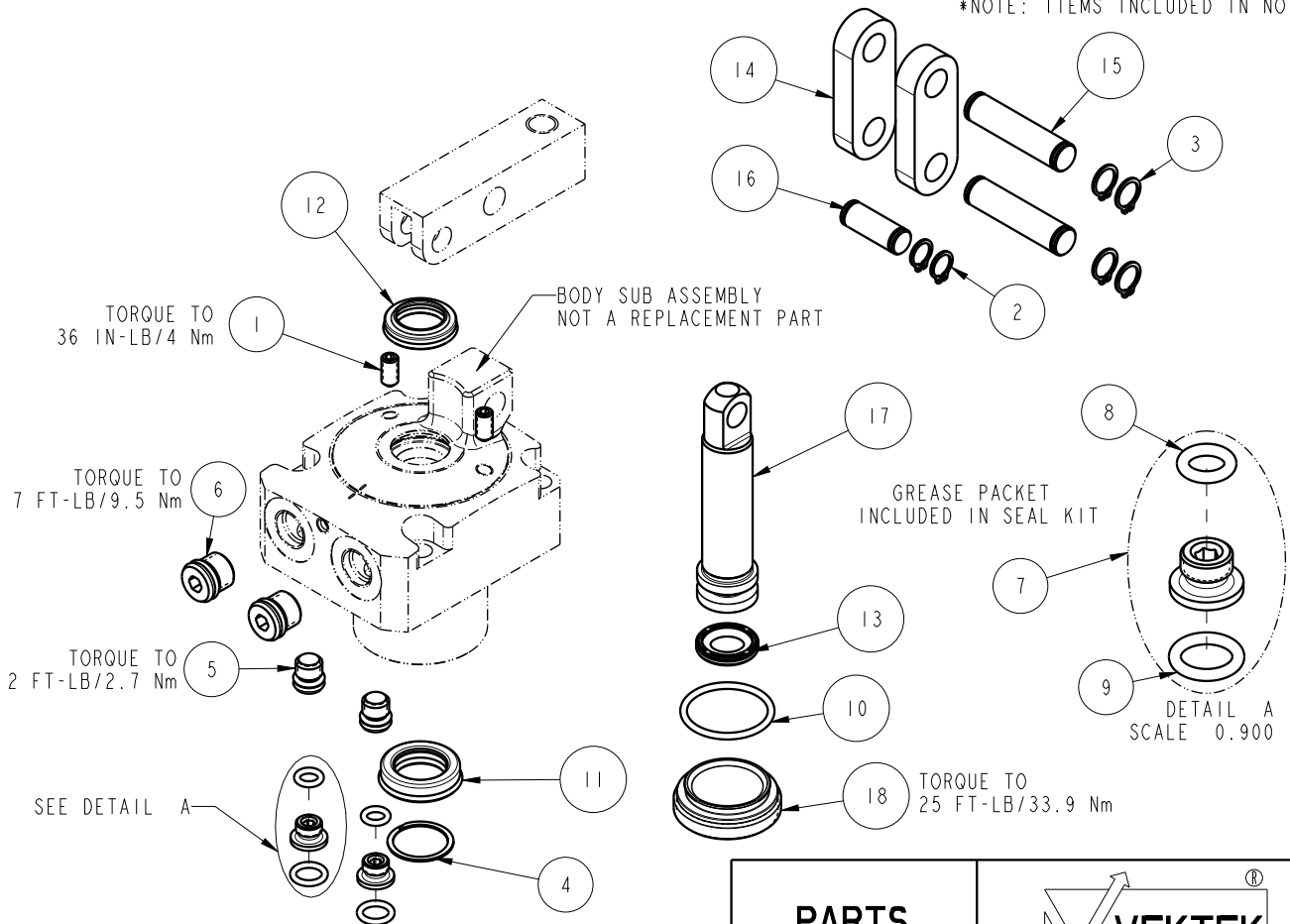


NO	QTY	PART NO	DESCRIPTION	STD SEAL KIT
1	2	21500318	SCREW, SET, CUP PT, M5 X .8 X 10	
2	2	23050034	RING, RTNG, EXT, 0.312	X
3	4	23050035	RING, RTNG, EXT, 0.354	X
4	1	23050051	RETAINING RING, SPIRAL, INTL	X
5	2	30601122	PLUG, SOCH, SAE 2	
6	2	30601144	PLUG, SOCH, SAE 4	
7	2	30871120	ASSY, ADAPTER, SC, TF, MM	X
8	2	39050036	O-RING, (-009)	X*
9	2	39050042	O-RING, (-011)	X*
10	1	39051150	O-RING, (24mm X 2)	X
11	1	39052060	SEAL, ROD, RSD, 15, 85A, AU	X
12	1	39053041	SEAL, WIPER, SNAP IN, WED, 15, 94A, AU	X
13	1	39056032	SEAL, CAP, PISTON, 18, 94A, AU	X
14	2	81600147	LINK, LC, 7MPa, 40B	
15	2	81600152	PIN, LINK, LC, 7MPa, 40B	
16	1	81600157	PIN, PLUNGER, LC, 7MPa, 40B	
17	1	81600252	PLUNGER, LC, TL360, DA, 1400/6.22kN	
18	1	81600272	CAP, LC, TL360, 1400/6.22kN	
N/A	N/A	60160202	KIT, SEAL, ASSY, LC, TL360, DA, 14001b	NOTED

\*NOTE: ITEMS INCLUDED IN NO. 7



### PARTS LIST



VEKTEK, INC.  
1334 E. SIXTH AVE. P.O. BOX 625  
EMPORIA, KS. 66801 U.S.A.

ASSEMBLIES AFFECTED  
16-3218-00

PARTS LIST, ASSY, LC, TL360, DA, 14001b

ROTARY LUG

SIZE  
A PL1621

REV  
C

C	5168	RELEASE	ALS	9/5/23
REV	IN ACCORDANCE WITH ECN	EFFECTIVE DATE	REVISED BY	DATE
DRW BY:	BCD	<b>DRAWING STATUS: Released</b>		
DATE:	07-15-16	PRODUCTION APPROVED FOR RELEASED STATUS ONLY		